

# CERTIFICATE OF LOCATION OF GOVERNMENT CORNER

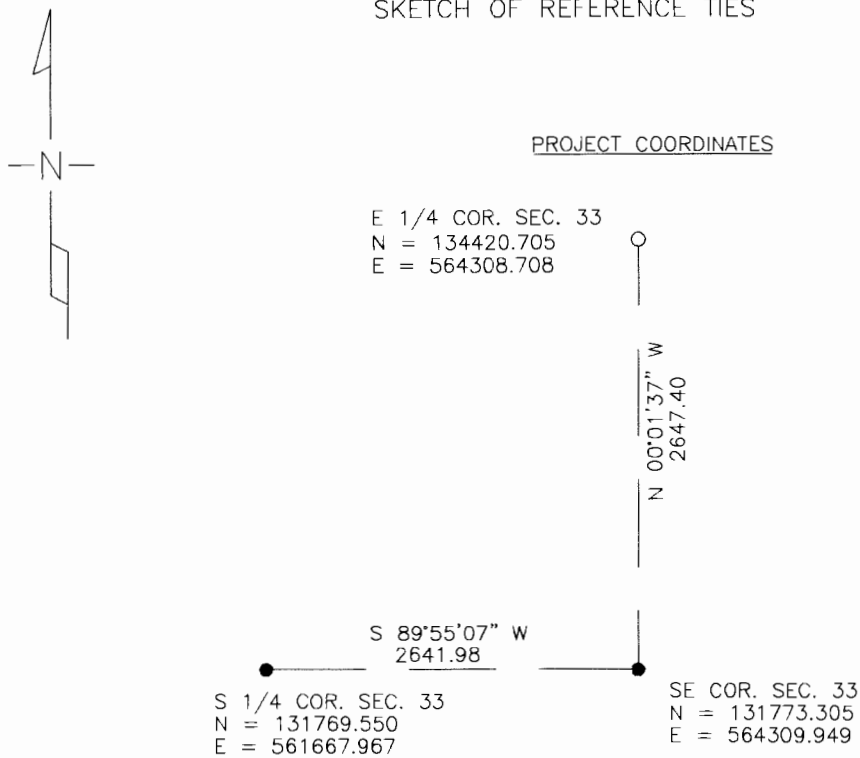
East Quarter \_\_\_\_\_ Corner of Section 33 , Township 106 , Range 39W , 5th P.M.

STATE OF MINNESOTA, County of Murray

At the corner location shown on the sketch

- On Apr. 21, 2004 found a 6" X 15" Stone 15" Deep with a cluster of small stones around larger stone
- left monument as found   
  lowered monument,   
  removed monument (explain)
  
- On May 5, 2004 placed a 1" Iron Pipe with Survey Cap 23008 directly over top center of 6" X 15" stone.

## SKETCH OF REFERENCE TIES



Statement of evidence relative to this corner location is on back of page.

I hereby certify that this document and the data contained herein was prepared by me or under my direct supervision.

Perry L. Zieske  
SIGNATURE

5-13-04  
DATE

MN. REGISTRATION NO. 23008

- Land Surveyor,     Professional Engineer
- County Surveyor,     County Engineer

### OFFICE OF THE COUNTY RECORDER

I hereby certify that this document was filed in the Co. Recorder's Office at \_\_\_\_\_ on the

\_\_\_\_\_ day of MAY 14 2004

County Recorder \_\_\_\_\_  
By \_\_\_\_\_, Deputy

DOCUMENT NO. \_\_\_\_\_